



# PRESTWICK

4 BEDROOM | 4 FULL BATH | 2 HALF BATH  
1-CAR & 2-CAR SPLIT GARAGE



“BUILDING YOU THE BEST HOME YOU’LL EVER OWN”

Ecclestone Signature Homes has been named “Builder of the Year” three times by the Gold Coast Builder’s Association, along with being the recipient of more than 100 prestigious homebuilding awards.



- 561-841-6976
- Info@eshomesfl.com
- EcclestoneHomes.com
- Tesoro Club

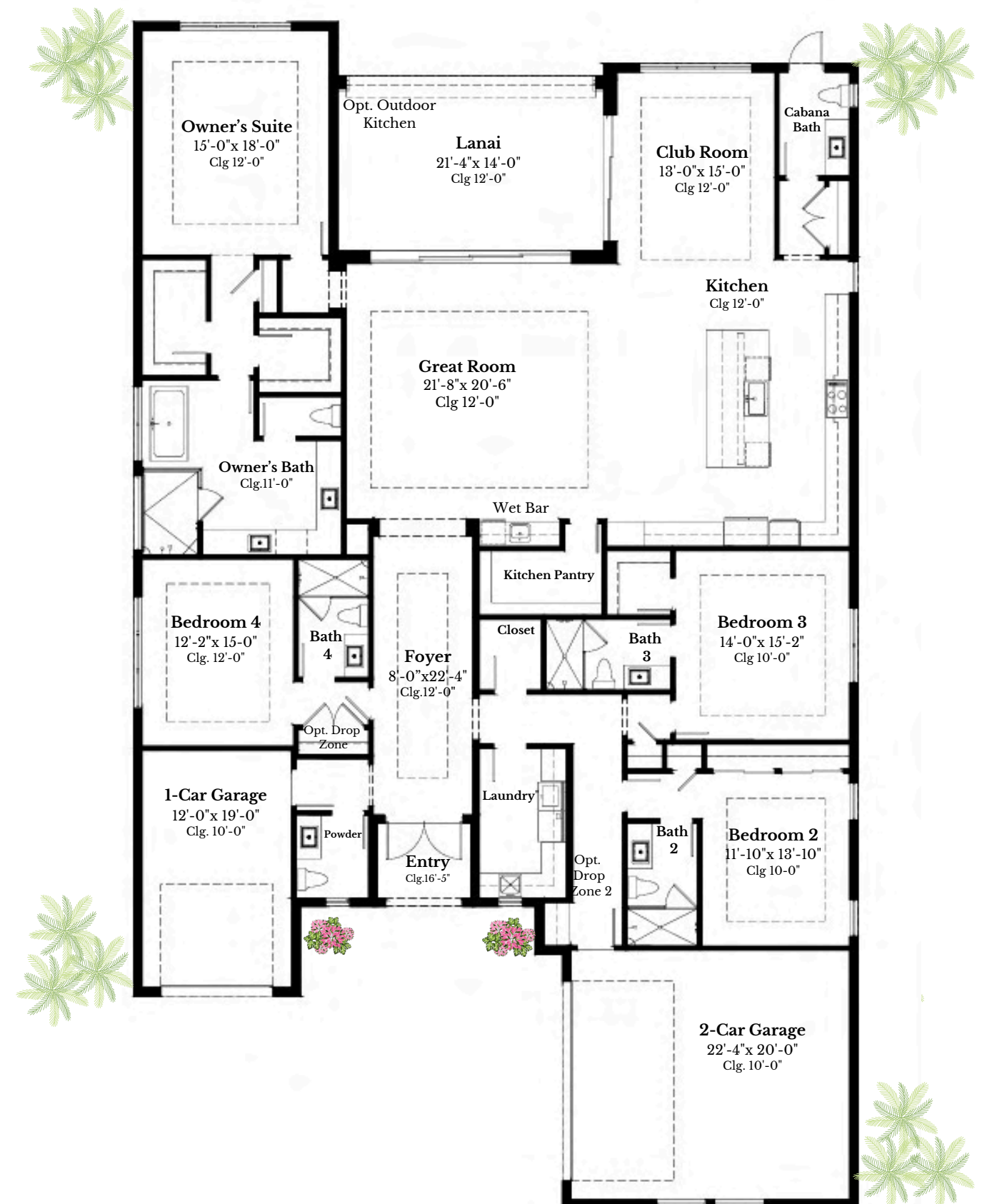




# PRESTWICK

**4 BEDROOM, 4 FULL BATH,  
2 HALF BATH, 1 & 2-CAR SPLIT GARAGE**

<b>Total A/C</b>	<b>3,549 Sq. Ft.</b>
Covered Entry	50 Sq. Ft.
Covered Patio	299 Sq. Ft.
2-Car Garage	489 Sq. Ft.
1-Car Garage	254 Sq. Ft.
<b>Total Non A/C</b>	<b>1,092 Sq. Ft.</b>
<b>TOTAL</b>	<b>4,640 Sq. Ft.</b>



*Ecclestone*<sup>SM</sup>  
SIGNATURE HOMES

Prices, homesites, amenities, home designs, square footage and other information subject to errors, changes, omissions, deletions, availability, prior sales and withdrawal at any time without notice. Square footage numbers are approximate and may vary depending on the standard measurement used. Photos and/or drawings of homes may show upgraded landscaping and may not represent the lowest priced homes in the community. All renderings and floorplans in these materials are an artist's conceptual drawings and will vary from the actual plans and homes as built. © June 2024.



CGC056970